

Our Yard



PLAN, ESTIMATE AND SUPERVISE CONSTRUCTION OF THE SHIP BUILDING YARD.

SUN SHIPBUILDING & DRY DOCK CO. • CHESTER, PA. • SINCE 1897

COST OF BUREACRACY VS. ENTERPRISE

The Governor of Pennsylvania said "Public utilities and shipbuilding are given special tax concessions denied to the public at large, the ordinary consumer, and all other industry."

Do you suppose that he does not know these simple facts?

#1. There is no tax on sales of ships in

- a. New Jersey where New York Ship is located.
- b. Maryland for vessels built for interstate and foreign commerce where Bethlehem Steel has their Sparrows Point Shipbuilding Plant.
- c. Massachusetts where Bethlehem Steel has their Fall River Shipbuilding Plant.
- d. California for vessels over 1000 ton burden where Bethlehem Steel has shipbuilding plants.
- e. Virginia where Newport News Shipbuilding Plant is located.
- f. Mississippi on vessels over 10 ton displacement—where Ingalls Shipbuilding is located.

#2. Our State already levies one of the highest combined corporate taxes of any state in the country.

#3. To burden shipbuilding in Pennsylvania with the addition of a sales tax would inevitably drive our business to the other states mentioned above.

#4. Loss of ships to build would inevitably mean loss of work for you.

**MRS. BURNES TANKER
HALF-TON**

Mrs. Richard C. Burns, wife of Sun Ship's president, broke a shattering bottle on the floor of the Mechanics Club 4:30 November 14, 1938.

The same vessel was recently set to sea by Richard and Wally Shipyard workers in Dallas (Tex.) to transport the 14,000-ton, 507' hull ship to the yard located by 274 Ave. The name is Sun Shipyard (Tex.) but the fate of the incident and one inside one graduate of Southern Texas, Ship's new half-ton, or about



MR. RICHARD C. BURNS, JR. (RIGHT), SUN SHIP'S PRES., HANDS OVER COPY OF SUN SHIP'S CHARTER TO MRS. BURNES (LEFT) AND WALLY SHIPYARD.

**SUN SHIP INTRAMURAL SOFTBALL
TO BE STARTED WHEN PLAYERS
AND DEPTS. ARE SIGNED — BY MAY 17**



MR. RICHARD C. BURNS, JR. (RIGHT), SUN SHIP'S PRES., AND WALLY SHIPYARD, SUN SHIP'S VICE PRES., SHAKE HANDS AT THE SIGNING OF THE CHARTER FOR INTRAMURAL SOFTBALL.

BATTERY-UP

Not enough boys, not high cost, not lack of equipment, and not a lack of interest are the reasons why Sun Ship's intramural softball team is not yet formed.

The reason, says Mr. Wally Shipyard, vice president of Sun Ship, is that the boys are not interested in the game.

Mr. Shipyard, however, is not discouraged. He says that he will start a team as soon as the boys are interested in the game.

Mr. Shipyard is a former player of the game and he says that he will start a team as soon as the boys are interested in the game.

Mr. Shipyard is a former player of the game and he says that he will start a team as soon as the boys are interested in the game.

Mr. Shipyard is a former player of the game and he says that he will start a team as soon as the boys are interested in the game.

I believe the first step of a truly great team is the quality of the men who play for it. Quality, that is the key word. For really great men having a certain feeling that the game is not to them but through them. And they are something else, in every other way, and are probably, but not necessarily, successful. Quality.

SUN FISH — by Publishing & Printing Co., Chicago, Ill. — Vol. 10, No. 1
 1938 — 1939 — Chicago, Illinois — Price 10c

Entered 1938

John Day Editor, Sun Shipyard, Houston, TEXAS 1938 — at Right, World Editor, "Sun Ship"
 Houston, Texas Editor, "Sun Ship" and "Sun Ship" at Center, "Sun Ship" Editor, Sun Ship,
 Houston, Texas Editor, "Sun Ship" at Right, "Sun Ship" Editor, Sun Ship,
 Houston, Texas Editor, "Sun Ship" at Right, "Sun Ship" Editor, Sun Ship



FIRE AND EXPLOSION PROTECTION ABOARD

CO. HERTS HAS SYSTEM INSTALLED ON THE U.S.S. "BARKHAMPTON"

By Joseph M. Hoffman

The installation of a fire and explosion protection system aboard the U.S.S. "Barkhampton" (DD-961) is the first of its kind for a ship of this class.

The system, designed and installed by the U.S. Army Corps of Engineers, is a comprehensive fire and explosion protection system that will protect the ship's vital systems and personnel in the event of a fire or explosion.

The system consists of a fire detection system, a fire alarm system, a fire extinguishing system, and a fire escape system.

The fire detection system consists of smoke detectors and heat detectors that will detect a fire in its early stages.

The fire alarm system consists of a central alarm panel that will sound an alarm throughout the ship when a fire is detected.

The fire extinguishing system consists of fire extinguishers and fire hoses that will be used to extinguish a fire.

The fire escape system consists of fire escape routes and fire escape equipment that will be used to evacuate the ship in the event of a fire.



The fire and explosion protection system installed on the U.S.S. "Barkhampton" (DD-961) is the first of its kind for a ship of this class.



The system is a comprehensive fire and explosion protection system that will protect the ship's vital systems and personnel in the event of a fire or explosion.

The system consists of a fire detection system, a fire alarm system, a fire extinguishing system, and a fire escape system.

The fire detection system consists of smoke detectors and heat detectors that will detect a fire in its early stages.

The fire alarm system consists of a central alarm panel that will sound an alarm throughout the ship when a fire is detected.

The fire extinguishing system consists of fire extinguishers and fire hoses that will be used to extinguish a fire.

The fire escape system consists of fire escape routes and fire escape equipment that will be used to evacuate the ship in the event of a fire.

The system is a comprehensive fire and explosion protection system that will protect the ship's vital systems and personnel in the event of a fire or explosion.

The system consists of a fire detection system, a fire alarm system, a fire extinguishing system, and a fire escape system.

The fire detection system consists of smoke detectors and heat detectors that will detect a fire in its early stages.

The fire alarm system consists of a central alarm panel that will sound an alarm throughout the ship when a fire is detected.

The system is a comprehensive fire and explosion protection system that will protect the ship's vital systems and personnel in the event of a fire or explosion.

The system consists of a fire detection system, a fire alarm system, a fire extinguishing system, and a fire escape system.

The fire detection system consists of smoke detectors and heat detectors that will detect a fire in its early stages.

The fire alarm system consists of a central alarm panel that will sound an alarm throughout the ship when a fire is detected.

The fire extinguishing system consists of fire extinguishers and fire hoses that will be used to extinguish a fire.

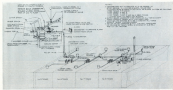
The fire escape system consists of fire escape routes and fire escape equipment that will be used to evacuate the ship in the event of a fire.

The system is a comprehensive fire and explosion protection system that will protect the ship's vital systems and personnel in the event of a fire or explosion.

The system consists of a fire detection system, a fire alarm system, a fire extinguishing system, and a fire escape system.



The fire and explosion protection system installed on the U.S.S. "Barkhampton" (DD-961) is the first of its kind for a ship of this class.



which is attached to the cable and is used to pull the cable through the rig. The cable is then attached to the rig and is used to pull the rig through the water. The rig is then used to pull the cable through the water and is used to pull the rig through the water.

The rig is used to pull the cable through the water and is used to pull the rig through the water. The rig is then used to pull the cable through the water and is used to pull the rig through the water. The rig is then used to pull the cable through the water and is used to pull the rig through the water.

The rig is used to pull the cable through the water and is used to pull the rig through the water. The rig is then used to pull the cable through the water and is used to pull the rig through the water. The rig is then used to pull the cable through the water and is used to pull the rig through the water.

The rig is used to pull the cable through the water and is used to pull the rig through the water. The rig is then used to pull the cable through the water and is used to pull the rig through the water. The rig is then used to pull the cable through the water and is used to pull the rig through the water.

FROM SUN OIL REPORT.

The Sun Oil Co. report for the first three months of 1940 shows a significant increase in production and sales. The company's production of refined petroleum products increased by 10% over the same period in 1939.

The Sun Oil Co. report for the first three months of 1940 shows a significant increase in production and sales. The company's production of refined petroleum products increased by 10% over the same period in 1939.



Engineering for the Sun Oil Co. rig, showing the rig from the side of the structure.

The Sun Oil Co. report for the first three months of 1940 shows a significant increase in production and sales. The company's production of refined petroleum products increased by 10% over the same period in 1939.

The Sun Oil Co. report for the first three months of 1940 shows a significant increase in production and sales. The company's production of refined petroleum products increased by 10% over the same period in 1939.

HONOR MOURN DEATH

The death of Mrs. J. M. [Name obscured] is being mourned by a large number of friends. The funeral will be held at [Location obscured] on [Date obscured] at [Time obscured]. The interment will be in [Cemetery obscured].

Mrs. [Name obscured] was born [Date obscured] in [Location obscured]. She was a member of the [Church obscured]. She was a devoted wife and mother. She is survived by [Family members obscured].

WAGNER SAYS HIS

is Standard Oil of California

Wagner says his [Text obscured] is [Text obscured]. He is [Text obscured] in [Text obscured].

DR. F. E. BRADY

is Standard Oil of California

Dr. Brady is [Text obscured] in [Text obscured]. He is [Text obscured] in [Text obscured].



At (left) a net is being hauled in by a group of fishermen. At (right) a net is being hauled in by a group of fishermen.

...the net is being hauled in by a group of fishermen. At (right) a net is being hauled in by a group of fishermen.

...the net is being hauled in by a group of fishermen. At (right) a net is being hauled in by a group of fishermen.

...the net is being hauled in by a group of fishermen. At (right) a net is being hauled in by a group of fishermen.

...the net is being hauled in by a group of fishermen. At (right) a net is being hauled in by a group of fishermen.

...the net is being hauled in by a group of fishermen. At (right) a net is being hauled in by a group of fishermen.

...the net is being hauled in by a group of fishermen. At (right) a net is being hauled in by a group of fishermen.

...the net is being hauled in by a group of fishermen. At (right) a net is being hauled in by a group of fishermen.

...the net is being hauled in by a group of fishermen. At (right) a net is being hauled in by a group of fishermen.

...the net is being hauled in by a group of fishermen. At (right) a net is being hauled in by a group of fishermen.

At (left) a net is being hauled in by a group of fishermen. At (right) a net is being hauled in by a group of fishermen.



At (left) a net is being hauled in by a group of fishermen. At (right) a net is being hauled in by a group of fishermen.



WALTER BROWN, 84, is awarded a 25 year Service Annuity by the State of Ohio.



BERNICE JOHNSON, 77, is awarded a 25 year Service Annuity by the State of Ohio.



WALTER BROWN, 84, is awarded a 25 year Service Annuity by the State of Ohio. WALTER BROWN, 84, is awarded a 25 year Service Annuity by the State of Ohio. WALTER BROWN, 84, is awarded a 25 year Service Annuity by the State of Ohio. WALTER BROWN, 84, is awarded a 25 year Service Annuity by the State of Ohio.



WALTER BROWN, 84, is awarded a 25 year Service Annuity by the State of Ohio. WALTER BROWN, 84, is awarded a 25 year Service Annuity by the State of Ohio. WALTER BROWN, 84, is awarded a 25 year Service Annuity by the State of Ohio. WALTER BROWN, 84, is awarded a 25 year Service Annuity by the State of Ohio.



WALTER BROWN, 84, is awarded a 25 year Service Annuity by the State of Ohio. WALTER BROWN, 84, is awarded a 25 year Service Annuity by the State of Ohio. WALTER BROWN, 84, is awarded a 25 year Service Annuity by the State of Ohio. WALTER BROWN, 84, is awarded a 25 year Service Annuity by the State of Ohio.

A CENTURY OF WORK IN FORTY YEARS



FROM TOP LEFT: PRESIDENTS, VICE-PRESIDENTS, BOARD & STAFF MEMBERS OF THE NATIONAL LABORERS' UNION AT THE 1957 ANNUAL MEETING, PHOTODUPLICATIONS, STAGE & LIGHTS FOR THE 1957 ANNUAL MEETING, STAFF MEMBERS AT THE 1957 ANNUAL MEETING.

March Awards 1957



Service—Loyalty

25 Years

1932 _____

20 Years

1937 _____

1942 _____

1947 _____

1952 _____

1957 _____

25 Years

1932 _____

1942 _____

1947 _____

1952 _____

1957 _____

MURRAY BOUL

25 Years

1932 _____

20 Years

1937 _____

15 Years

1942 _____

HOOVER BOUL

25 Years

1932 _____

1942 _____

25 Years

1932 _____

1942 _____

NORTH AMERICAN BRANCH

A Century of Work in Forty Years

The National Laborers' Union, which has been in existence for over a century, is celebrating its 100th anniversary in 1957. The union has a long and distinguished history of service to the laboring masses of this country.

The North American Branch of the union has a long and distinguished history of service to the laboring masses of this country. The branch has a long and distinguished history of service to the laboring masses of this country.

The North American Branch of the union has a long and distinguished history of service to the laboring masses of this country. The branch has a long and distinguished history of service to the laboring masses of this country.

25 Years

1932 _____

1942 _____

1947 _____

1952 _____

1957 _____

U. S. FOREIGN AID

IN A HOT SPOT

(Week 8 Continues)

1957 _____

1957 _____

1957 _____

1957 _____

1957 _____

1957 _____

1957 _____

1957 _____

1957 _____

1957 _____

1957 _____

The North American Branch of the union has a long and distinguished history of service to the laboring masses of this country. The branch has a long and distinguished history of service to the laboring masses of this country.

The North American Branch of the union has a long and distinguished history of service to the laboring masses of this country. The branch has a long and distinguished history of service to the laboring masses of this country.

The North American Branch of the union has a long and distinguished history of service to the laboring masses of this country. The branch has a long and distinguished history of service to the laboring masses of this country.

The North American Branch of the union has a long and distinguished history of service to the laboring masses of this country. The branch has a long and distinguished history of service to the laboring masses of this country.

The North American Branch of the union has a long and distinguished history of service to the laboring masses of this country. The branch has a long and distinguished history of service to the laboring masses of this country.

The North American Branch of the union has a long and distinguished history of service to the laboring masses of this country. The branch has a long and distinguished history of service to the laboring masses of this country.

The North American Branch of the union has a long and distinguished history of service to the laboring masses of this country. The branch has a long and distinguished history of service to the laboring masses of this country.

HIGH STEEL AND COURAGE



Workers on the steel structure of the new \$100-million, 1.5-mile-long, two-level, 10-lane highway bridge, under construction, near the entrance to the Chesapeake Bay, are seen in the top row. In the bottom row, workers are seen on the steel structure of the bridge.

WORKING BEFORE A 1' "Yield" Beams

Workers on the steel structure of the new \$100-million, 1.5-mile-long, two-level, 10-lane highway bridge, under construction, near the entrance to the Chesapeake Bay, are seen in the top row. In the bottom row, workers are seen on the steel structure of the bridge.

Workers on the steel structure of the new \$100-million, 1.5-mile-long, two-level, 10-lane highway bridge, under construction, near the entrance to the Chesapeake Bay, are seen in the top row. In the bottom row, workers are seen on the steel structure of the bridge.

Workers on the steel structure of the new \$100-million, 1.5-mile-long, two-level, 10-lane highway bridge, under construction, near the entrance to the Chesapeake Bay, are seen in the top row. In the bottom row, workers are seen on the steel structure of the bridge.



**D
I
S
M
A
S
T
E
R
I
E
S**



At Sea Ship

CONTINUES

At Sea Ship

**AT SEA SHIP
CONTINUES**





After concrete setting, the vertical columns were reinforced. Spacing them at 10-foot intervals in front and in groups of three, 1000 psi concrete, 1000 psi steel, and 1000 psi steel reinforcement were used. The columns support the structure. A steel beam is also shown. It is located in the top of the column. It carries the load from the concrete walls. The steel beam is 10 feet high and 10 feet wide. It is made of steel. The steel beam is 10 feet high and 10 feet wide. It is made of steel. The steel beam is 10 feet high and 10 feet wide. It is made of steel.



After steel columns were set, the steel reinforcement was placed. The reinforcement was placed in the top of the column. It carries the load from the concrete walls. The steel beam is 10 feet high and 10 feet wide. It is made of steel. The steel beam is 10 feet high and 10 feet wide. It is made of steel. The steel beam is 10 feet high and 10 feet wide. It is made of steel.

After the steel columns were set, the steel reinforcement was placed. The reinforcement was placed in the top of the column. It carries the load from the concrete walls. The steel beam is 10 feet high and 10 feet wide. It is made of steel. The steel beam is 10 feet high and 10 feet wide. It is made of steel.

"LONG SHOT" DAY

The structure stands on the ground. The ground is level. The structure is made of steel and concrete. The structure is 10 feet high and 10 feet wide. It is made of steel. The steel beam is 10 feet high and 10 feet wide. It is made of steel.

It should be a very colorful scene. The structure is made of steel and concrete. The structure is 10 feet high and 10 feet wide. It is made of steel. The steel beam is 10 feet high and 10 feet wide. It is made of steel.

The work is in a great deal. The work is in a great deal. The work is in a great deal. The work is in a great deal. The work is in a great deal.

OUR YARD



48 RIGGING

By A. J. "Whispering" Sullivan
 The rigging industry is a vast and varied one, encompassing a wide range of activities from the construction of large-scale industrial plants to the maintenance of small-scale structures. The industry is characterized by its complexity and the high level of skill required to perform the various tasks involved. The rigging process is a critical one, as it involves the safe and efficient movement of heavy loads and the construction of complex structures. The industry is also characterized by its seasonal nature, with many projects being completed during the summer months. The rigging industry is a vital part of the construction industry, and its success is essential for the completion of many large-scale projects. The industry is also characterized by its high level of safety, as the workers involved in the process are often working in high-risk environments. The rigging industry is a challenging and rewarding one, and it offers many opportunities for growth and advancement. The industry is also characterized by its strong sense of community, as the workers often work together to complete projects and share their knowledge and experience. The rigging industry is a vital part of the construction industry, and its success is essential for the completion of many large-scale projects. The industry is also characterized by its high level of safety, as the workers involved in the process are often working in high-risk environments. The rigging industry is a challenging and rewarding one, and it offers many opportunities for growth and advancement. The industry is also characterized by its strong sense of community, as the workers often work together to complete projects and share their knowledge and experience.

By A. J. "Whispering" Sullivan
 The rigging industry is a vast and varied one, encompassing a wide range of activities from the construction of large-scale industrial plants to the maintenance of small-scale structures. The industry is characterized by its complexity and the high level of skill required to perform the various tasks involved. The rigging process is a critical one, as it involves the safe and efficient movement of heavy loads and the construction of complex structures. The industry is also characterized by its seasonal nature, with many projects being completed during the summer months. The rigging industry is a vital part of the construction industry, and its success is essential for the completion of many large-scale projects. The industry is also characterized by its high level of safety, as the workers involved in the process are often working in high-risk environments. The rigging industry is a challenging and rewarding one, and it offers many opportunities for growth and advancement. The industry is also characterized by its strong sense of community, as the workers often work together to complete projects and share their knowledge and experience.

By A. J. "Whispering" Sullivan
 The rigging industry is a vast and varied one, encompassing a wide range of activities from the construction of large-scale industrial plants to the maintenance of small-scale structures. The industry is characterized by its complexity and the high level of skill required to perform the various tasks involved. The rigging process is a critical one, as it involves the safe and efficient movement of heavy loads and the construction of complex structures. The industry is also characterized by its seasonal nature, with many projects being completed during the summer months. The rigging industry is a vital part of the construction industry, and its success is essential for the completion of many large-scale projects. The industry is also characterized by its high level of safety, as the workers involved in the process are often working in high-risk environments. The rigging industry is a challenging and rewarding one, and it offers many opportunities for growth and advancement. The industry is also characterized by its strong sense of community, as the workers often work together to complete projects and share their knowledge and experience.

84 INVESTMENT

By A. J. "Whispering" Sullivan
 The investment industry is a vast and varied one, encompassing a wide range of activities from the construction of large-scale industrial plants to the maintenance of small-scale structures. The industry is characterized by its complexity and the high level of skill required to perform the various tasks involved. The investment process is a critical one, as it involves the safe and efficient movement of heavy loads and the construction of complex structures. The industry is also characterized by its seasonal nature, with many projects being completed during the summer months. The investment industry is a vital part of the construction industry, and its success is essential for the completion of many large-scale projects. The industry is also characterized by its high level of safety, as the workers involved in the process are often working in high-risk environments. The investment industry is a challenging and rewarding one, and it offers many opportunities for growth and advancement. The industry is also characterized by its strong sense of community, as the workers often work together to complete projects and share their knowledge and experience.

The investment industry is a vast and varied one, encompassing a wide range of activities from the construction of large-scale industrial plants to the maintenance of small-scale structures. The industry is characterized by its complexity and the high level of skill required to perform the various tasks involved. The investment process is a critical one, as it involves the safe and efficient movement of heavy loads and the construction of complex structures. The industry is also characterized by its seasonal nature, with many projects being completed during the summer months. The investment industry is a vital part of the construction industry, and its success is essential for the completion of many large-scale projects. The industry is also characterized by its high level of safety, as the workers involved in the process are often working in high-risk environments. The investment industry is a challenging and rewarding one, and it offers many opportunities for growth and advancement. The industry is also characterized by its strong sense of community, as the workers often work together to complete projects and share their knowledge and experience.

MAINTENANCE DEPT. IV

By Frank Egan

THE MAINTENANCE DEPARTMENT OF THE U. S. ARMY is a very important part of the Army. It is the backbone of the Army and without it the Army would be unable to function. The maintenance department is responsible for the repair and maintenance of all Army equipment, including vehicles, weapons, and communications equipment. It is also responsible for the repair and maintenance of the Army's infrastructure, including roads, bridges, and buildings.

The maintenance department is a very large and complex organization. It is divided into many different branches, each of which is responsible for a specific area of maintenance. These branches include the repair and maintenance of vehicles, weapons, and communications equipment, as well as the repair and maintenance of the Army's infrastructure. The maintenance department is also responsible for the training of maintenance personnel and the development of maintenance procedures.

Beetle

By Dr. Egan

Beetle
1000
1000
1000

1000
1000
1000

1000
1000
1000

WEEDING FACTS FOR THE WEEDER

WEEDING FACTS FOR THE WEEDER. The weeder is a very important part of the Army. It is responsible for the removal of weeds and other unwanted plants from the Army's infrastructure. Weeds can be a major problem for the Army, as they can interfere with the operation of equipment and the movement of personnel. The weeder is responsible for the identification and removal of weeds, and for the prevention of their regrowth. The weeder is also responsible for the maintenance of the Army's infrastructure, including roads, bridges, and buildings.

By Dr. Egan



Poison Ivy

Poison Oak

Poison Sumac

POISON IVY, POISON OAK, and POISON SUMAC are three of the most common and most dangerous of the "Big Three" plants. They are all members of the Toxicodendron genus and contain a highly irritating oil called urushiol. Contact with any part of these plants can cause a severe allergic reaction, known as a rash, which is characterized by red, itchy, and blistering skin. The rash can last for several weeks and can be very painful. It is important to avoid contact with these plants and to seek medical attention if you do come into contact with them.

POISON IVY is a climbing vine with three leaflets per stem. The leaves are glossy green and have a smooth margin. The flowers are small and green. The fruit is a small, round, red berry. POISON OAK is a shrub or tree with three leaflets per stem. The leaves are glossy green and have a smooth margin. The flowers are small and green. The fruit is a small, round, red berry. POISON SUMAC is a shrub with many small, round, red berries. The leaves are glossy green and have a smooth margin. The flowers are small and green. The fruit is a small, round, red berry.



4 Year Tube Mill

By Frank White

The new 4-year tube mill at the U.S. Steel plant in West Chester, Ohio, is the largest of its kind in the world. It is a product of the company's research and development department, which has been working on the design and construction of this type of mill for several years. The mill is designed to produce tubes of various diameters and wall thicknesses, and is capable of producing up to 100,000 tons of tubes per year. The mill is a significant improvement over the older 2-year tube mills, and is expected to be in operation by the end of the year.

The new 4-year tube mill at the U.S. Steel plant in West Chester, Ohio, is the largest of its kind in the world. It is a product of the company's research and development department, which has been working on the design and construction of this type of mill for several years. The mill is designed to produce tubes of various diameters and wall thicknesses, and is capable of producing up to 100,000 tons of tubes per year. The mill is a significant improvement over the older 2-year tube mills, and is expected to be in operation by the end of the year.

The new 4-year tube mill at the U.S. Steel plant in West Chester, Ohio, is the largest of its kind in the world. It is a product of the company's research and development department, which has been working on the design and construction of this type of mill for several years. The mill is designed to produce tubes of various diameters and wall thicknesses, and is capable of producing up to 100,000 tons of tubes per year. The mill is a significant improvement over the older 2-year tube mills, and is expected to be in operation by the end of the year.

**U. S. CO. INDUSTRY
HALL-MARY DOWNS**

The new 4-year tube mill at the U.S. Steel plant in West Chester, Ohio, is the largest of its kind in the world. It is a product of the company's research and development department, which has been working on the design and construction of this type of mill for several years. The mill is designed to produce tubes of various diameters and wall thicknesses, and is capable of producing up to 100,000 tons of tubes per year. The mill is a significant improvement over the older 2-year tube mills, and is expected to be in operation by the end of the year.



The group of men in suits standing together in the photograph are members of the U.S. Steel plant in West Chester, Ohio. They are standing in front of the new 4-year tube mill, which is the largest of its kind in the world. The men are smiling and appear to be proud of the new facility.

AT SIXTEEN



When he was sixteen, he was a member of the Boy Scouts and was a member of the local youth center. He was a member of the local youth center and was a member of the local youth center. He was a member of the local youth center and was a member of the local youth center.

AS A CLOWN



He was a member of the local youth center and was a member of the local youth center. He was a member of the local youth center and was a member of the local youth center. He was a member of the local youth center and was a member of the local youth center.

— TODAY



He was a member of the local youth center and was a member of the local youth center. He was a member of the local youth center and was a member of the local youth center. He was a member of the local youth center and was a member of the local youth center.

74 DEPT. BULLETIN

By Mrs. Dorella

The first of the series of articles in this bulletin is a story of a young man who was a member of the local youth center. He was a member of the local youth center and was a member of the local youth center. He was a member of the local youth center and was a member of the local youth center.

He was a member of the local youth center and was a member of the local youth center. He was a member of the local youth center and was a member of the local youth center. He was a member of the local youth center and was a member of the local youth center.

He was a member of the local youth center and was a member of the local youth center. He was a member of the local youth center and was a member of the local youth center. He was a member of the local youth center and was a member of the local youth center.



A.

... ..

... ..

... ..

... ..

... ..

... ..

... ..

... ..

... ..

... ..

... ..

... ..

... ..

... ..

... ..

... ..

... ..

... ..

... ..

... ..

... ..

... ..

... ..

... ..

... ..



By [Name]

... ..

... ..

... ..

... ..

... ..

... ..

... ..

... ..

... ..

... ..

... ..

... ..

... ..

... ..

... ..

... ..

... ..

... ..

... ..

... ..

... ..

LET THE GO!

... ..

... ..

... ..

... ..

... ..

... ..

... ..

