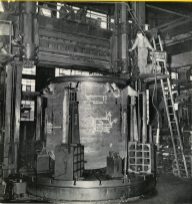


Our Yard

SHIP REPAIRING AND
RYE BECK COMPANY
CHESTER, PA.

September, 1956



TO ALL EMPLOYEES

IN THE INTEREST OF CORRECTING MISCONCEPTIONS

1. Unemployment Compensation is payable to YOU if you become unemployed through no fault of your own.
 2. YOU do not pay any of the Unemployment Compensation Tax. It is not a part of your deductions, and should not be confused with Social Security, one-half of which you DO pay.
 3. YOUR EMPLOYER pays ALL the tax for Unemployment Compensation.
 4. It is to your advantage to help eliminate "withering" on the Unemployment Compensation as there will be money for you when you really need and deserve it.
 5. Employees are in favor of Unemployment Compensation for those entitled to it . . . those who are out of work through no fault of their own.
-

BLOOD

the boat. The boat was built in 1978 and has 140 hours of use. The boat is in excellent condition and is a real beauty. The boat is a real beauty and is a real beauty.

The boat is a real beauty and is a real beauty. The boat is a real beauty and is a real beauty. The boat is a real beauty and is a real beauty. The boat is a real beauty and is a real beauty.

The boat is a real beauty and is a real beauty. The boat is a real beauty and is a real beauty. The boat is a real beauty and is a real beauty. The boat is a real beauty and is a real beauty.

AND BOWLERS

The boat is a real beauty and is a real beauty. The boat is a real beauty and is a real beauty. The boat is a real beauty and is a real beauty. The boat is a real beauty and is a real beauty.



OUR COVER

The boat is a real beauty and is a real beauty. The boat is a real beauty and is a real beauty. The boat is a real beauty and is a real beauty. The boat is a real beauty and is a real beauty.

The boat is a real beauty and is a real beauty. The boat is a real beauty and is a real beauty. The boat is a real beauty and is a real beauty. The boat is a real beauty and is a real beauty. The boat is a real beauty and is a real beauty.

The boat is a real beauty and is a real beauty. The boat is a real beauty and is a real beauty. The boat is a real beauty and is a real beauty. The boat is a real beauty and is a real beauty.

The boat is a real beauty and is a real beauty. The boat is a real beauty and is a real beauty. The boat is a real beauty and is a real beauty. The boat is a real beauty and is a real beauty.

The boat is a real beauty and is a real beauty. The boat is a real beauty and is a real beauty. The boat is a real beauty and is a real beauty. The boat is a real beauty and is a real beauty.

LAUNCHING OF THE "TWO HUNDRED"

The boat is a real beauty and is a real beauty. The boat is a real beauty and is a real beauty. The boat is a real beauty and is a real beauty. The boat is a real beauty and is a real beauty.

The boat is a real beauty and is a real beauty. The boat is a real beauty and is a real beauty. The boat is a real beauty and is a real beauty. The boat is a real beauty and is a real beauty.



OUR FISHING BOAT EQUIPMENT & SUPPLY CO., INC., 2000 S. 10TH ST., SUITE 100, DENVER, CO. 80202. TEL. 733-2200. FAX. 733-2201. WWW.FISHINGBOAT.COM

THE BOAT FINDER AND BOAT FINDER SERVICE, 10000 W. 10TH AVENUE, SUITE 100, DENVER, CO. 80202. TEL. 733-2200. FAX. 733-2201. WWW.FISHINGBOAT.COM



SEPTEMBER 2000



PRESENTING SAFETY CERTIFICATES

On June 22, Safety Engineers present the recipients of their top safety men of the West, all honored members of the Brotherhood of Railway and Air Line, to "Top Executive" when the latter has presented them with certificates of appreciation for their safety work.

Presented to the group are: Mr. Walter, Mr. Wilcox, Mr. Brown, Mr. Moore, Paul White, Arthur Morrison and Mr. Williamson.

Also present are: Mr. Perry, Mr. O'Brien, Frank Cox, Oscar Wolf, Frank Stewart, Paul Smith, George Armstrong, William Wilson.



On June 22, representatives of the Brotherhood of Railway and Air Line, who are engaged in the safety work of the Brotherhood of Railway and Air Line, are shown in their safety work. The group is shown in their safety work, which is a very important part of the safety work of the Brotherhood of Railway and Air Line. The group is shown in their safety work, which is a very important part of the safety work of the Brotherhood of Railway and Air Line.

David

By Jim Connor

It's strange that you
Don't like me,
I can't get close,
How did that get
in my mind?

In the end
All conversation,
Talk about
Your opinion,
I'm not.

You will
Never be here,
Made up my
Mind about
Your mind!

Along the line

There is the place of the Street scene,
A scene though there could be no end,
No there.

Nothing, this, the end scene.

the first, the second, the third, the fourth, the fifth, the sixth, the seventh, the eighth, the ninth, the tenth, the eleventh, the twelfth, the thirteenth, the fourteenth, the fifteenth, the sixteenth, the seventeenth, the eighteenth, the nineteenth, the twentieth, the twenty-first, the twenty-second, the twenty-third, the twenty-fourth, the twenty-fifth, the twenty-sixth, the twenty-seventh, the twenty-eighth, the twenty-ninth, the thirtieth, the thirty-first, the thirty-second, the thirty-third, the thirty-fourth, the thirty-fifth, the thirty-sixth, the thirty-seventh, the thirty-eighth, the thirty-ninth, the fortieth, the forty-first, the forty-second, the forty-third, the forty-fourth, the forty-fifth, the forty-sixth, the forty-seventh, the forty-eighth, the forty-ninth, the fiftieth, the fifty-first, the fifty-second, the fifty-third, the fifty-fourth, the fifty-fifth, the fifty-sixth, the fifty-seventh, the fifty-eighth, the fifty-ninth, the sixtieth, the sixty-first, the sixty-second, the sixty-third, the sixty-fourth, the sixty-fifth, the sixty-sixth, the sixty-seventh, the sixty-eighth, the sixty-ninth, the seventieth, the seventy-first, the seventy-second, the seventy-third, the seventy-fourth, the seventy-fifth, the seventy-sixth, the seventy-seventh, the seventy-eighth, the seventy-ninth, the eightieth, the eighty-first, the eighty-second, the eighty-third, the eighty-fourth, the eighty-fifth, the eighty-sixth, the eighty-seventh, the eighty-eighth, the eighty-ninth, the ninetieth, the ninety-first, the ninety-second, the ninety-third, the ninety-fourth, the ninety-fifth, the ninety-sixth, the ninety-seventh, the ninety-eighth, the ninety-ninth, the hundredth.

THE TONGUE

The tongue is a muscular organ in the mouth. It is used for speaking, swallowing, and tasting. The tongue is made of muscle and is covered with a thin layer of tissue called the tongue coating. The tongue is attached to the floor of the mouth by a band of tissue called the lingual frenulum. The tongue is also attached to the roof of the mouth by the hard palate and the soft palate. The tongue is a very important organ and is essential for life.

The tongue is a muscular organ in the mouth. It is used for speaking, swallowing, and tasting. The tongue is made of muscle and is covered with a thin layer of tissue called the tongue coating. The tongue is attached to the floor of the mouth by a band of tissue called the lingual frenulum. The tongue is also attached to the roof of the mouth by the hard palate and the soft palate. The tongue is a very important organ and is essential for life.

THE TONGUE

The tongue is a muscular organ in the mouth. It is used for speaking, swallowing, and tasting. The tongue is made of muscle and is covered with a thin layer of tissue called the tongue coating. The tongue is attached to the floor of the mouth by a band of tissue called the lingual frenulum. The tongue is also attached to the roof of the mouth by the hard palate and the soft palate. The tongue is a very important organ and is essential for life.

The tongue is a muscular organ in the mouth. It is used for speaking, swallowing, and tasting. The tongue is made of muscle and is covered with a thin layer of tissue called the tongue coating. The tongue is attached to the floor of the mouth by a band of tissue called the lingual frenulum. The tongue is also attached to the roof of the mouth by the hard palate and the soft palate. The tongue is a very important organ and is essential for life.

THE TONGUE

The tongue is a muscular organ in the mouth. It is used for speaking, swallowing, and tasting. The tongue is made of muscle and is covered with a thin layer of tissue called the tongue coating. The tongue is attached to the floor of the mouth by a band of tissue called the lingual frenulum. The tongue is also attached to the roof of the mouth by the hard palate and the soft palate. The tongue is a very important organ and is essential for life.

THE TONGUE AND THE MOUTH

The tongue and the mouth are two important organs in the human body. The tongue is a muscular organ that is used for speaking, swallowing, and tasting. The mouth is the opening in the face through which food and drink enter the body. The tongue and the mouth are closely related and work together to help us eat and speak.



BOB BROWN AND STEVE WOODMAN, left, have a new puppy, Steve's dog, with them. With him are Bruce and Mattie, the dog's mother.

and the other two men, Steve Woodman and Bob Brown, are also on the boat. Steve is wearing a white t-shirt and a white cap, and Bob is wearing a white t-shirt and a white cap. They are all looking towards the camera.



STEVE WOODMAN AND BOB BROWN, left, are with the dog, Steve's dog, with them.

Steve Woodman and Bob Brown are also on the boat. Steve is wearing a white t-shirt and a white cap, and Bob is wearing a white t-shirt and a white cap. They are all looking towards the camera.

Steve Woodman and Bob Brown are also on the boat. Steve is wearing a white t-shirt and a white cap, and Bob is wearing a white t-shirt and a white cap. They are all looking towards the camera.



STEVE WOODMAN, left, is running along the beach. With him are Bruce and Mattie, the dog's mother.

NOVEMBER 1994

NOVEMBER

MEMBERSHIP	1994	1993
Regular	1,234	1,187
Student	567	542
Life	123	118
Corporate	89	85
Young Professional	345	330
Family	210	205
Emeritus	78	75
Total	2,636	2,532

DECEMBER

MEMBERSHIP	1994	1993
Regular	1,345	1,298
Student	612	587
Life	134	129
Corporate	98	93
Young Professional	378	363
Family	225	220
Emeritus	89	84
Total	3,181	3,074

MEMBERSHIP

The American Petroleum Institute (API) has announced that its membership has grown significantly over the past year. As of November 1994, the total membership stood at 3,181, up from 2,636 in November 1993. This growth is attributed to a combination of factors, including the addition of new members and the renewal of existing memberships. The Institute's membership is diverse, encompassing a wide range of industry professionals, from students and young professionals to corporate executives and family members. The growth in membership reflects the Institute's ongoing commitment to providing valuable resources and services to the petroleum industry. The Institute's membership is a testament to its leadership in the industry and its dedication to promoting the interests of its members. The Institute's membership is a key asset, providing a platform for collaboration and the exchange of ideas among industry professionals. The Institute's membership is a reflection of its success in building a strong and vibrant community of industry professionals. The Institute's membership is a source of pride and a testament to its ongoing commitment to the petroleum industry. The Institute's membership is a key asset, providing a platform for collaboration and the exchange of ideas among industry professionals. The Institute's membership is a reflection of its success in building a strong and vibrant community of industry professionals. The Institute's membership is a source of pride and a testament to its ongoing commitment to the petroleum industry.

The American Petroleum Institute (API) has announced that its membership has grown significantly over the past year. As of November 1994, the total membership stood at 3,181, up from 2,636 in November 1993. This growth is attributed to a combination of factors, including the addition of new members and the renewal of existing memberships. The Institute's membership is diverse, encompassing a wide range of industry professionals, from students and young professionals to corporate executives and family members. The growth in membership reflects the Institute's ongoing commitment to providing valuable resources and services to the petroleum industry. The Institute's membership is a testament to its leadership in the industry and its dedication to promoting the interests of its members. The Institute's membership is a key asset, providing a platform for collaboration and the exchange of ideas among industry professionals. The Institute's membership is a reflection of its success in building a strong and vibrant community of industry professionals. The Institute's membership is a source of pride and a testament to its ongoing commitment to the petroleum industry.

EDWARD S. MASON

Edward S. Mason, a prominent figure in the petroleum industry, has been named as the new president of the American Petroleum Institute (API). Mason, who has spent the majority of his career at API, will be taking over the reins of the organization from the current president. Mason's appointment is a testament to his extensive experience and leadership in the industry. He has held several key positions at API, including vice president and general manager, and has been instrumental in the organization's success over the years. Mason's appointment is a significant milestone for API, as he will be leading the organization through a period of continued growth and development. Mason's appointment is a testament to his extensive experience and leadership in the industry. He has held several key positions at API, including vice president and general manager, and has been instrumental in the organization's success over the years. Mason's appointment is a significant milestone for API, as he will be leading the organization through a period of continued growth and development. Mason's appointment is a testament to his extensive experience and leadership in the industry. He has held several key positions at API, including vice president and general manager, and has been instrumental in the organization's success over the years. Mason's appointment is a significant milestone for API, as he will be leading the organization through a period of continued growth and development.

Face Figures

By Colin Clark

The American Petroleum Institute (API) has announced that its membership has grown significantly over the past year. As of November 1994, the total membership stood at 3,181, up from 2,636 in November 1993. This growth is attributed to a combination of factors, including the addition of new members and the renewal of existing memberships. The Institute's membership is diverse, encompassing a wide range of industry professionals, from students and young professionals to corporate executives and family members. The growth in membership reflects the Institute's ongoing commitment to providing valuable resources and services to the petroleum industry. The Institute's membership is a testament to its leadership in the industry and its dedication to promoting the interests of its members. The Institute's membership is a key asset, providing a platform for collaboration and the exchange of ideas among industry professionals. The Institute's membership is a reflection of its success in building a strong and vibrant community of industry professionals. The Institute's membership is a source of pride and a testament to its ongoing commitment to the petroleum industry.



The Student Government members, including President [Name], Vice President [Name], and other officers, are shown here.

Student Government
 Officers for the year 1967-68 are:
 President: [Name]
 Vice President: [Name]
 Secretary: [Name]
 Treasurer: [Name]
 Public Relations: [Name]
 Activities: [Name]
 Sports: [Name]
 The Student Government is pleased to announce the following activities for the year 1967-68.

SPORTS LEADER WITH COACHES

[Name] was named Sports Leader for the year 1967-68. He will be working closely with the coaches to promote sports activities and encourage student participation.

WOMEN'S LEADER WITH COACHES

[Name] was named Women's Leader for the year 1967-68. She will be working closely with the coaches to promote sports activities and encourage female student participation.

The Student Government is pleased to announce the following activities for the year 1967-68.



[Name] is receiving a certificate of appreciation from the Student Government for her outstanding leadership.

JULY SAFETY WINNERS

[Name] and [Name] were named July Safety Winners for their excellent record in maintaining safety during the month of July.

[Name] and [Name] were named July Safety Winners for their excellent record in maintaining safety during the month of July.

[Name] and [Name] were named July Safety Winners for their excellent record in maintaining safety during the month of July.

Ice Truckmen

As the weather warms, the ice truckmen of the city will be busy with their work. The city's ice plant, located at the corner of 10th and 11th streets, will be producing ice for the city's ice trucks. The ice trucks will be delivering ice to the homes and businesses of the city. The ice truckmen will be working hard to keep the city's ice supply up to date.

They will be working hard to keep the city's ice supply up to date. The ice truckmen will be working hard to keep the city's ice supply up to date. The ice truckmen will be working hard to keep the city's ice supply up to date.

TRUCK ICE TRUCKS

From the city's ice plant, the ice trucks will be delivering ice to the homes and businesses of the city. The ice truckmen will be working hard to keep the city's ice supply up to date.

They will be working hard to keep the city's ice supply up to date. The ice truckmen will be working hard to keep the city's ice supply up to date. The ice truckmen will be working hard to keep the city's ice supply up to date.

They will be working hard to keep the city's ice supply up to date. The ice truckmen will be working hard to keep the city's ice supply up to date. The ice truckmen will be working hard to keep the city's ice supply up to date.

DAIRY BAR



The woman is standing behind a counter, likely at a dairy bar, holding a small object. The woman is standing behind a counter, likely at a dairy bar, holding a small object.

The woman is standing behind a counter, likely at a dairy bar, holding a small object. The woman is standing behind a counter, likely at a dairy bar, holding a small object.

The woman is standing behind a counter, likely at a dairy bar, holding a small object. The woman is standing behind a counter, likely at a dairy bar, holding a small object.

The woman is standing behind a counter, likely at a dairy bar, holding a small object.



SUN & FERRY PROVIDE MANY CONVENIENCE SERVICE IN THE AREA

The Sun & Ferry provide many convenience services in the area. The Sun & Ferry provide many convenience services in the area. The Sun & Ferry provide many convenience services in the area.

The Sun & Ferry provide many convenience services in the area. The Sun & Ferry provide many convenience services in the area. The Sun & Ferry provide many convenience services in the area.

The Sun & Ferry provide many convenience services in the area. The Sun & Ferry provide many convenience services in the area. The Sun & Ferry provide many convenience services in the area.

The Sun & Ferry provide many convenience services in the area. The Sun & Ferry provide many convenience services in the area. The Sun & Ferry provide many convenience services in the area.

...the dog's behavior is a reflection of its environment. A dog that is well-cared for and loved will be a happy and healthy dog. A dog that is neglected and abused will be a sad and sickly dog. It is the responsibility of the owner to provide the best possible care for their dog.



...the dog's behavior is a reflection of its environment. A dog that is well-cared for and loved will be a happy and healthy dog. A dog that is neglected and abused will be a sad and sickly dog. It is the responsibility of the owner to provide the best possible care for their dog.

...the dog's behavior is a reflection of its environment. A dog that is well-cared for and loved will be a happy and healthy dog. A dog that is neglected and abused will be a sad and sickly dog. It is the responsibility of the owner to provide the best possible care for their dog.

**YOU SAW AND
YOU KNOW**
...the dog's behavior is a reflection of its environment. A dog that is well-cared for and loved will be a happy and healthy dog. A dog that is neglected and abused will be a sad and sickly dog. It is the responsibility of the owner to provide the best possible care for their dog.



...the dog's behavior is a reflection of its environment. A dog that is well-cared for and loved will be a happy and healthy dog. A dog that is neglected and abused will be a sad and sickly dog. It is the responsibility of the owner to provide the best possible care for their dog.

...the dog's behavior is a reflection of its environment. A dog that is well-cared for and loved will be a happy and healthy dog. A dog that is neglected and abused will be a sad and sickly dog. It is the responsibility of the owner to provide the best possible care for their dog.

...the dog's behavior is a reflection of its environment. A dog that is well-cared for and loved will be a happy and healthy dog. A dog that is neglected and abused will be a sad and sickly dog. It is the responsibility of the owner to provide the best possible care for their dog.



The American Kitten Club
 Member: Mrs. Catherine
 No. 12345
 100 Main St., New York, N.Y.
 Telephone: 1-234-5678
 Club Secretary: Mrs. J. K. Smith



...the dog's behavior is a reflection of its environment. A dog that is well-cared for and loved will be a happy and healthy dog. A dog that is neglected and abused will be a sad and sickly dog. It is the responsibility of the owner to provide the best possible care for their dog.



Three young boys from the school are shown in the photograph above.

The school is a large, modern building with many windows. It is surrounded by a well-kept lawn and some trees. The building has a prominent entrance with a set of stairs leading up to it. The overall appearance is that of a well-maintained educational institution.

The school is a large, modern building with many windows. It is surrounded by a well-kept lawn and some trees. The building has a prominent entrance with a set of stairs leading up to it. The overall appearance is that of a well-maintained educational institution.

The school is a large, modern building with many windows. It is surrounded by a well-kept lawn and some trees. The building has a prominent entrance with a set of stairs leading up to it. The overall appearance is that of a well-maintained educational institution.

ELECTRICAL

By John P. [Name] [Address] [Phone Number]

The school is a large, modern building with many windows. It is surrounded by a well-kept lawn and some trees. The building has a prominent entrance with a set of stairs leading up to it. The overall appearance is that of a well-maintained educational institution.

The school is a large, modern building with many windows. It is surrounded by a well-kept lawn and some trees. The building has a prominent entrance with a set of stairs leading up to it. The overall appearance is that of a well-maintained educational institution.



A classic car is shown in the photograph above.

The school is a large, modern building with many windows. It is surrounded by a well-kept lawn and some trees. The building has a prominent entrance with a set of stairs leading up to it. The overall appearance is that of a well-maintained educational institution.

The school is a large, modern building with many windows. It is surrounded by a well-kept lawn and some trees. The building has a prominent entrance with a set of stairs leading up to it. The overall appearance is that of a well-maintained educational institution.

The school is a large, modern building with many windows. It is surrounded by a well-kept lawn and some trees. The building has a prominent entrance with a set of stairs leading up to it. The overall appearance is that of a well-maintained educational institution.

LINK-SPOTS

The school is a large, modern building with many windows. It is surrounded by a well-kept lawn and some trees. The building has a prominent entrance with a set of stairs leading up to it. The overall appearance is that of a well-maintained educational institution.

The school is a large, modern building with many windows. It is surrounded by a well-kept lawn and some trees. The building has a prominent entrance with a set of stairs leading up to it. The overall appearance is that of a well-maintained educational institution.

The school is a large, modern building with many windows. It is surrounded by a well-kept lawn and some trees. The building has a prominent entrance with a set of stairs leading up to it. The overall appearance is that of a well-maintained educational institution.



A young man is shown in the photograph above.

38 DEPT.

By Bob Wilson

With the Department's 38th anniversary, it's time to look back at the many changes that have taken place since the first day of the year. The Department has grown from a small group of men to a large organization that serves the community in many ways. The Department has always been a part of the community, and it will continue to be in the future. The Department has always been a part of the community, and it will continue to be in the future.

The Department has always been a part of the community, and it will continue to be in the future. The Department has always been a part of the community, and it will continue to be in the future. The Department has always been a part of the community, and it will continue to be in the future. The Department has always been a part of the community, and it will continue to be in the future.



NO DEPT

The Department's 38th anniversary is a time to look back at the many changes that have taken place since the first day of the year. The Department has grown from a small group of men to a large organization that serves the community in many ways. The Department has always been a part of the community, and it will continue to be in the future.

ALLAN MOYER - 30 YEARS SERVICE



Allan Moyer, a member of the Department for 30 years, is being honored for his long and dedicated service. He has been a part of the Department since its early days and has seen many changes over the years. He is a man of integrity and has always been a role model for his colleagues. He is being presented with a certificate of appreciation for his 30 years of service to the Department and the community.

A 30th Anniversary Certificate with Allan Moyer, Member of Springfield, Mo.

The Department has always been a part of the community, and it will continue to be in the future. The Department has always been a part of the community, and it will continue to be in the future. The Department has always been a part of the community, and it will continue to be in the future. The Department has always been a part of the community, and it will continue to be in the future.

The Department has always been a part of the community, and it will continue to be in the future. The Department has always been a part of the community, and it will continue to be in the future. The Department has always been a part of the community, and it will continue to be in the future. The Department has always been a part of the community, and it will continue to be in the future.

The Department has always been a part of the community, and it will continue to be in the future. The Department has always been a part of the community, and it will continue to be in the future. The Department has always been a part of the community, and it will continue to be in the future. The Department has always been a part of the community, and it will continue to be in the future.



By Bob Wilson

The Department has always been a part of the community, and it will continue to be in the future. The Department has always been a part of the community, and it will continue to be in the future. The Department has always been a part of the community, and it will continue to be in the future. The Department has always been a part of the community, and it will continue to be in the future.

In Memoriam

It is with deep sorrow that we announce the death of a young man, a member of our organization, who passed away on Monday, June 11, 1968, at the age of 24. He was born on August 15, 1943, in Chicago, Illinois. He was a member of the University of Illinois at Urbana-Champaign and was a member of the Phi Kappa Phi Honor Society. He was a member of the Phi Kappa Phi Honor Society and was a member of the Phi Kappa Phi Honor Society. He was a member of the Phi Kappa Phi Honor Society and was a member of the Phi Kappa Phi Honor Society.



He was a member of the Phi Kappa Phi Honor Society and was a member of the Phi Kappa Phi Honor Society. He was a member of the Phi Kappa Phi Honor Society and was a member of the Phi Kappa Phi Honor Society. He was a member of the Phi Kappa Phi Honor Society and was a member of the Phi Kappa Phi Honor Society. He was a member of the Phi Kappa Phi Honor Society and was a member of the Phi Kappa Phi Honor Society.

He was a member of the Phi Kappa Phi Honor Society and was a member of the Phi Kappa Phi Honor Society. He was a member of the Phi Kappa Phi Honor Society and was a member of the Phi Kappa Phi Honor Society. He was a member of the Phi Kappa Phi Honor Society and was a member of the Phi Kappa Phi Honor Society. He was a member of the Phi Kappa Phi Honor Society and was a member of the Phi Kappa Phi Honor Society.



He was a member of the Phi Kappa Phi Honor Society and was a member of the Phi Kappa Phi Honor Society. He was a member of the Phi Kappa Phi Honor Society and was a member of the Phi Kappa Phi Honor Society. He was a member of the Phi Kappa Phi Honor Society and was a member of the Phi Kappa Phi Honor Society. He was a member of the Phi Kappa Phi Honor Society and was a member of the Phi Kappa Phi Honor Society.

He was a member of the Phi Kappa Phi Honor Society and was a member of the Phi Kappa Phi Honor Society. He was a member of the Phi Kappa Phi Honor Society and was a member of the Phi Kappa Phi Honor Society. He was a member of the Phi Kappa Phi Honor Society and was a member of the Phi Kappa Phi Honor Society. He was a member of the Phi Kappa Phi Honor Society and was a member of the Phi Kappa Phi Honor Society.



By M. "Crank" Cohen

It is with a heavy heart that I write this notice. I was a member of the Phi Kappa Phi Honor Society and was a member of the Phi Kappa Phi Honor Society. I was a member of the Phi Kappa Phi Honor Society and was a member of the Phi Kappa Phi Honor Society. I was a member of the Phi Kappa Phi Honor Society and was a member of the Phi Kappa Phi Honor Society. I was a member of the Phi Kappa Phi Honor Society and was a member of the Phi Kappa Phi Honor Society.

75 Department

By Joe Miller

It is with a heavy heart that I write this notice. I was a member of the Phi Kappa Phi Honor Society and was a member of the Phi Kappa Phi Honor Society. I was a member of the Phi Kappa Phi Honor Society and was a member of the Phi Kappa Phi Honor Society. I was a member of the Phi Kappa Phi Honor Society and was a member of the Phi Kappa Phi Honor Society. I was a member of the Phi Kappa Phi Honor Society and was a member of the Phi Kappa Phi Honor Society.



THINGS IN THE ARMY

BY ROBERT C. COOK
 (The Associated Press)



Two soldiers were seen in the Army. One was a "fat" soldier, the other was a "thin" soldier. The "fat" soldier was the "thin" soldier's "fat" soldier.



A soldier was seen in the Army. He was a "fat" soldier, the other was a "thin" soldier. The "fat" soldier was the "thin" soldier's "fat" soldier.



A soldier was seen in the Army. He was a "fat" soldier, the other was a "thin" soldier. The "fat" soldier was the "thin" soldier's "fat" soldier.



...of the "fat" soldier... of the "thin" soldier... of the "fat" soldier... of the "thin" soldier... of the "fat" soldier... of the "thin" soldier...

SHIPYARD FICTIONARY

By K. B. Wilson

- Shipyard**—A place where ships are built.
- Shipyard**—A place where ships are built.
- Shipyard**—A place where ships are built.
- Shipyard**—A place where ships are built.
- Shipyard**—A place where ships are built.
- Shipyard**—A place where ships are built.
- Shipyard**—A place where ships are built.



DR. GRILL HONOR GRAY SMITH
 Dr. Grill was seen in the Army. He was a "fat" soldier, the other was a "thin" soldier. The "fat" soldier was the "thin" soldier's "fat" soldier.



WHAT IS A MAN?

Men are what women marry.

They have two hands, two feet and sometimes two wives, but never more than one dollar or one idea. Like Turkish cigarettes, they are all made of the same material, the only difference some are better shaped than others.

Generally speaking, they may be divided into three classes, husbands, bastards and widowers. A husband is a negligible mass of ordinary, entirely unexcited by surprise. Bastards are of three types: prizes, surprises, consolation prizes. Making a husband out of a man is one of the highest forms of plastic surgery known to civilization. It requires science, sculpture, common sense, faith, hope and charity—mostly charity.

It is a psychological marvel that a small, timid, self-righteous thing should enjoy kissing a big, bold, worldly-wise, vulgar and lay-own woman thing like a man.

If you flatter him you frighten him to death, if you don't, you bore him to death. If you permit him to make love to you he gets tired of you in the end and if you don't he gets tired of you in the beginning.

If you wear gay colors, rings and a startling hat, he business to take you out if you don't he takes you out and waves all evening at a woman in gay colors, rings and a startling hat.

If you join in the drinking and appear of his guests, he warns you are drinking him to the death. If you don't, he warns you are a weak and nice.

If you are the clinging vine type, he doubts whether you have a brain. If you are modest, advanced and an intelligent woman, he doubts whether you have a heart. If you are silly, he longs for a bright man. If you are brilliant he longs for a playmate.

What is just a worm in the dust. He comes along, wiggles around for awhile and finally some children get him.



USS **BBT BATAAN** is seen in the 1940s during postwar repairs from the Washington plant in Groton, Pa. Two stern wings of the LST hulls, the Panama and Shastina, and manufacturing machinery were added. Bataan hulls are being divided into pairs on the open bottom of hull #21, the middle cargo ship hull being in #22 now. The so-called "half-hull" repair vessel is being developed from the standard hulls for carrier vessels, of which the 10 standard hulls already in service on the dry dock. Below, the second **BBT BATAAN** and third special series, being the standard in Europe Region. Repair work continues now after following the final pattern of shipping cargo.

